

# LAMINEX® XR GRADE

COMPACT LAMINATE



Laminex®  
Inspire your space



Laminex XR Grade Compact Laminate Partitioning Systems Doors in **Cosmic Grey** Panels in **Lunar Dust**

## RECOMMENDED APPLICATIONS

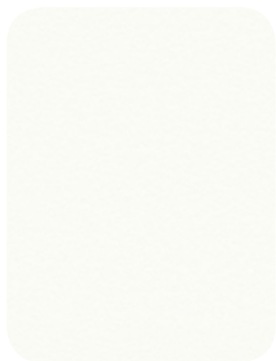
SHEET SIZE	3600mm x 1500mm
THICKNESS	13mm
APPLICATIONS	Partitioning, public amenities, offices and factories, hotels and restaurants, shopping centres, educational centres (i.e. schools and universities), clubs and entertainment centres, sporting and gymnasium centres, caravan parks and recreational centres, healthcare environments, etc.

## MATERIAL PROPERTIES

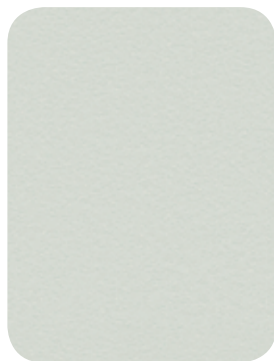
PROPERTY OR ATTRIBUTE	UNIT	REQUIREMENT	STANDARD*
<b>PHYSICAL PROPERTIES</b>			EN ISO 1183-1
Specific Gravity (mimimum) Weight 13mm Thickness	kg/m3 kg/m2	1350 18.5	
<b>PANEL TOLERANCE</b>			EN 438-4
Length Width Thickness 13mm Flatness	mm mm mm mm/m	± 5 ± 5 ± 0.60 ≤ 3	
<b>OPTICAL PROPERTIES</b>			AS/NZS 2924.1
Colour Stabilities  Stain Resistance Groups 1 and 2 Stain Resistance Groups 3 and 4	Grey Scale Blue Wool Scale Rating Rating	Minimum 4 Minimum 6 Pass Pass	
<b>MECHANICAL PROPERTIES</b>			
Modulus of Elasticity Tensile Strength Flexural Strength Craze Resistance Impact Resistance Immersion in Boiling Water Scratch Resistance# Stability at Elevated Temperature Wear Resistance Wet Heat Resistance at 100 °C Steam Resistance	Mpa Mpa Mpa Rating cm - N % Cycles Rating Rating	≤ 9000 ≤ 60 ≤ 80 Pass Pass Pass Pass Pass Pass Pass Pass Pass	EN ISO 178 EN ISO 527-2 EN ISO 178 AS/NZS 2924.1 AS/NZS 2924.1 AS/NZS 2924.1 AS/NZS 2924.1 AS/NZS 2924.1 AS/NZS 2924.1 EN 438-4 AS/NZS 2924.1
<b>THERMAL PROPERTIES</b>			
Thermal Conductivity Coefficient Cigarette Burns Dry Heat at 180 °C	W/mK Rating Rating	± 0.3 Pass Pass	DIN 52612 AS/NZS 2924.1 AS/NZS 2924.1

\*AS/NZS 2924.1: compact general – purpose standard grade (CGS material type). #Minimum of 1 N for dark colours.

## COLOUR RANGE



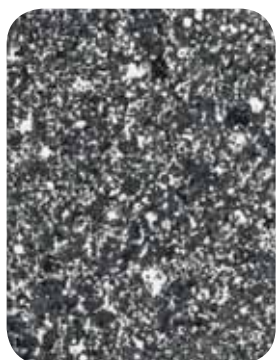
Cosmic White\*



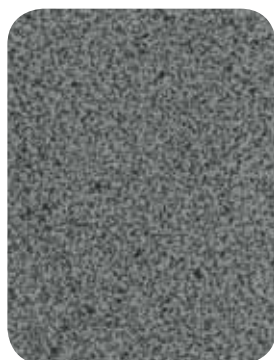
Cosmic Grey



Cosmic Black



Astro



Lunar Dust



Carbon Dust

The chemicals and reagents listed below were rated for Laminex XR Grade Compact Laminate in a covered method (watch glass cover) with exposure for a period of 16 hours. The reagents listed below do not damage Laminex XR Grade Compact Laminate. Those reagents marked with an asterisk (\*) may cause slight change in gloss or colour, depending upon the duration of exposure. Those marked with two asterisks (\*\*) will cause severe damage. Laminex recommends prompt cleanup of all spills using water, a cloth and mild detergent. If in doubt about the suitability of a particular chemical not listed below, contact 132 136. Before committing to a particular product, we suggest you obtain samples and perform in-situ tests with chemicals most likely to be in contact with the product.

### ACIDS

Acetic Acid (Glacial), 98%  
 Chromic Acid, 10%  
 Citric Acid, 10%  
 Dichromate Cleaning Solution\*  
 Formic Acid, 90%  
 Hydrochloric Acid, 37%  
 Hydrofluoric Acid, 40%\*\*  
 Nitric Acid, 30%  
 Nitric, 65%\*\*  
 Perchloric Acid, 60%\*  
 Phosphoric Acid, 85%  
 Sulphuric Acid, 33%  
 Sulphuric Acid, 98%\*\*

### ALKALIS

Ammonium Hydroxide, 28%  
 Potassium Hydroxide, 15%  
 Sodium Hydroxide, 46%

### SALTS

Copper Sulfate, 10%  
 Ferric Chloride, 10%  
 Potassium Permanganate, 1%  
 Silver Nitrate, 1%  
 Sodium Chloride, 10%  
 Sodium Hypochlorite, 16%

### ORGANIC CHEMICALS

Formaldehyde, 10%  
 Furfural  
 Phenol, 90%\*

### SOLVENTS

Acetone  
 Dichloromethane  
 Ethyl Acetate  
 Ethyl Alcohol  
 Ethylene Glycol  
 Ethylene Glycol Mono Butyl Ether  
 Isopropanol  
 Methyl Alcohol  
 Methyl Ethyl Ketone  
 Methyl Isobutyl Ketone  
 N – Butyl Acetate  
 N – Hexane  
 Tetrahydrofuran  
 Toluene  
 Trichloroethylene  
 Xylene

### BIOLOGICAL STAIN

Carbol Fuschin, 1%\*\*  
 Crystal Violet, 0.5%  
 Gentian Violet, 1% solution  
 Hydrogen Peroxide, 3%  
 Iodine Tincture, USP, 2%\*\*  
 Malachite Green Oxalate, 1%  
 Methylene Blue, 1%  
 Methyl Orange, 0.04%  
 Methyl Red, 0.1%  
 Methyl Violet 2B, 1%  
 Sudan III  
 Wrights Stain, 1%

### MOST CONVENTIONAL CLEANING AGENTS

Resistant to most common cleaning agents. Avoid the use of highly alkaline, highly acidic or abrasive cleaning agents.



Laminex® XR Grade Compact Laminate is as tough as it is versatile. It's a self-supporting decorative panel with superior moisture, wear and chemical resistance. Double-sided, cost-effective and easy to maintain, this laminate is the perfect choice for a range of environments including laboratories, public toilets, hair salons and other public amenities. Laminex XR Grade Compact Laminate resists acids, alkalis, corrosive salts and other destructive or staining substances. It is ideal for horizontal surfaces including counters, lab benches and table tops; and vertical surfaces including partitioning, cabinets and casework fronts. Laminex XR Grade Compact Laminate is covered by a 10 year limited warranty\*. For technical data refer to the Laminex XR Grade Compact Laminate Technical Data Sheet.

## EXTRA RESILIENT ■ SELF-SUPPORTING ■ VERTICAL OR HORIZONTAL APPLICATIONS



Cover and above right: Benchtop in Laminex XR Grade Compact Laminate **Cosmic White**. Above left: Benchtop in Laminex XR Grade Compact Laminate **Cosmic Grey**.

\*Please obtain a copy of the Laminex XR Grade Compact Laminate 10 year limited warranty from The Laminex Group or visit [laminex.com.au](http://laminex.com.au)



# Laminex®

Inspire your space

For a free sample chip call 1800 002 204. For more information visit [laminex.com.au](http://laminex.com.au) or call 132 136.

Laminex XR Grade Compact Laminate is marketed and distributed by The Laminex Group, a division of Laminex Group Pty Limited ABN 98 004 093 092. The colours of the products featured within the imagery in this brochure are as close to the Laminex XR Grade Compact Laminate range as photographic lighting and modern printing processes allow. Laminex XR Grade Compact Laminate range is no different than any other material in that darker colours will always show scratches and superficial wear and tear more readily than lighter colours. Laminex XR Grade Compact Laminate should be protected from strong, direct sunlight as continuous exposure may cause discolouration or fading to the surface. Please obtain a copy of the terms and conditions of the Laminex XR Grade Compact Laminate 10 year limited warranty from The Laminex Group or visit [laminex.com.au](http://laminex.com.au). This warranty is in addition to any rights that may exist under the Trade Practices Act. Laminex®.