

LAMINEX® VANITY SYSTEM



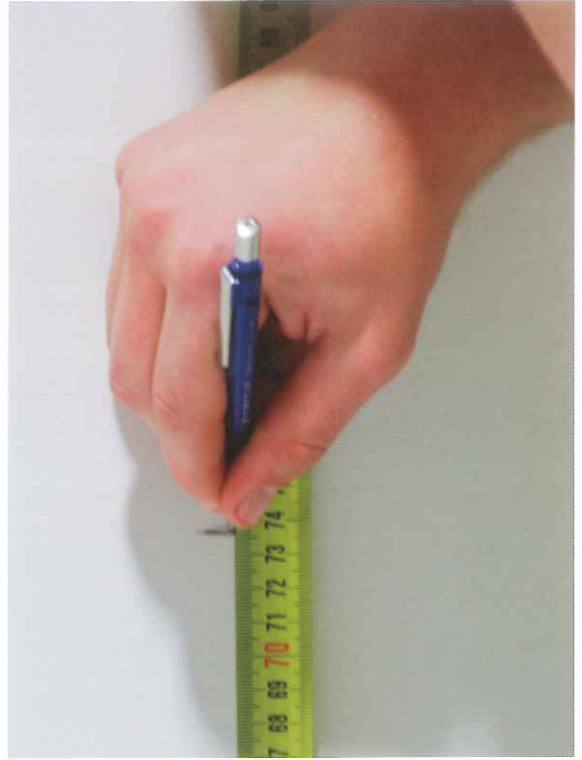
INSTALLATION GUIDE

Laminex®
Inspire your space

STEP 1

Measure desired height above the floor, minus 13mm for the thickness of the top and allowance for the height of the basin.

Mark this height on the back wall, and transfer this height to all walls on which the vanity is fixed.



STEP 2

Plumb wall channels and fix to wall.

Work out the location of the wall brackets to avoid interference with the basins.

Fix 50x50 angle aluminium and wall brackets to the wall between wall channels.



STEP 3

Fit the apron panels to the wall "U" channels, making the top of the panel flush with the top of the "U" channel.

For apron return panels, push hard into the "U" channel and make level.

Screw off apron in the "U" channel from the inside using 10g x 5/8" pan head screws.



STEP 4

Fit front apron corner extrusion (if applicable) making it flush with the top of the panel and screw off.

Hint:

Check screw depth to avoid penetration of front face. Use a depth gauge or block on the drill bit to avoid drilling through the face.

Pilot hole needs to be a minimum of 0.5mm deeper than the penetration of the screw. Use a 5/32" drill bit for a 1/2"x10 gauge screw.



STEP 5

Fit the front panel into the front apron corner extrusion, making the top of the panel flush with the top of the extrusion and screw off.

Fix 50x50 angle to the front apron, making sure that it doesn't interfere with fitting basins.



STEP 6

Fit top and even up side overhang (if applicable) and screw off using 1/2"x10g screws.

Silicone splashback to wall (if applicable).

Hint:

Check screw depth to avoid penetration of front face. Use a depth gauge or block on the drill bit to avoid drilling through the face.

Pilot hole needs to be a minimum of 0.5mm deeper than the penetration of the screw. Use a 5/32" drill bit for a 1/2"x10 gauge screw.

