

# LAMINEX® INNOVATIONS®



Laminex®  
Inspire your space



Laminex® Innovations® has been inspiring great design for decades and now it'll spark your imagination more than ever. Featuring the latest international looks, including the award-winning Plex collection, it offers various levels of lustre and luxury perfect for a wide range of commercial projects and high-end residential uses. With 65 contemporary decors in the Innovations palette, including silky satins, abstract designs, brushed finishes and nine new decors, there's a colour, texture and pattern for almost any vertical application. So when you want to create a look and feel that's truly inspirational, stay ahead of the curve with Laminex Innovations.

**65 DECORATIVE SURFACES ■ AWARD-WINNING DESIGNS ■ METALLICS ■ BRUSHED FINISHES**



COVER Columns, magazine racks, splashback and island bench front panel can be achieved using Laminex Innovations **Plex Copper**. Kickboard below bench seats in Laminex Innovations **Peacock**. Island benchtop in Laminex Freestyle **Arctic White**. Tables in Laminex **White**. Project: Marque Lawyers, NSW. Designer: Siren Design. TOP LEFT Wall panelling in Laminex Innovations **Plex Graphite**. BOTTOM LEFT Panelling behind basin in Laminex Innovations **Black Strike**. Recessed surrounding mirror in Laminex Innovations **Mirror Smoke**. Surrounding wall panelling in Laminex CrystalGloss **Black**. Project: Platinum Apartments, NSW Architect: Koichi Takada Architects Photography: Sharyn Cairns. RIGHT Wall panelling in Laminex Innovations **Plex Umbra**. OPPOSITE Wall panelling can be achieved using Laminex Innovations **Plex Copper**.

\*Please obtain a copy of the Laminex Innovations 7 year limited warranty from laminex.com.au

## INNOVATIONS PLEX COLLECTION

The Plex Collection is an avant-garde texture that illuminates the beauty and radiance of natural metals, giving a touch of luxury, glamour and authenticity to vertical surfaces. Exclusive to Laminex, Plex combines the colour and character of real metals\* with the practical, flexible properties of laminate. Created as a texture on top of real metal foils\*, Plex achieves a textile feel, yet with a crisp touch and low gloss sheen, inspired by satin and silk weaves. With six different options from traditional cool to new warm tones, Plex gives users the freedom to mix and match with established looks in the range. The result is a highly desirable and tactile laminate surface that exudes quality and helps achieve a fresh, timeless look.

### AWARD-WINNING DESIGN

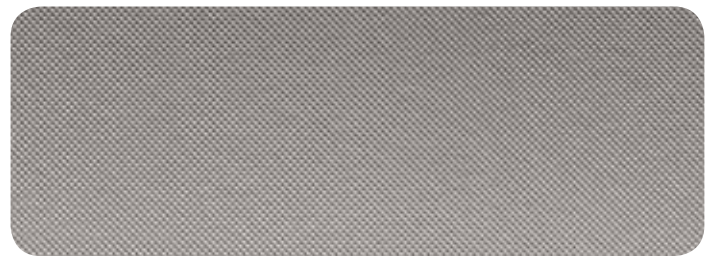
With a globally recognised Red Dot award for design, this highly on-trend collection is perfect for international projects. In the words of the judging panel, "the exclusive design of Plex combines the properties of flexibility and high-quality appeal for the enhancement of contemporary interior design schemes." Refer to the Laminex Metallics Technical Data Sheet for specific fabrication instructions.



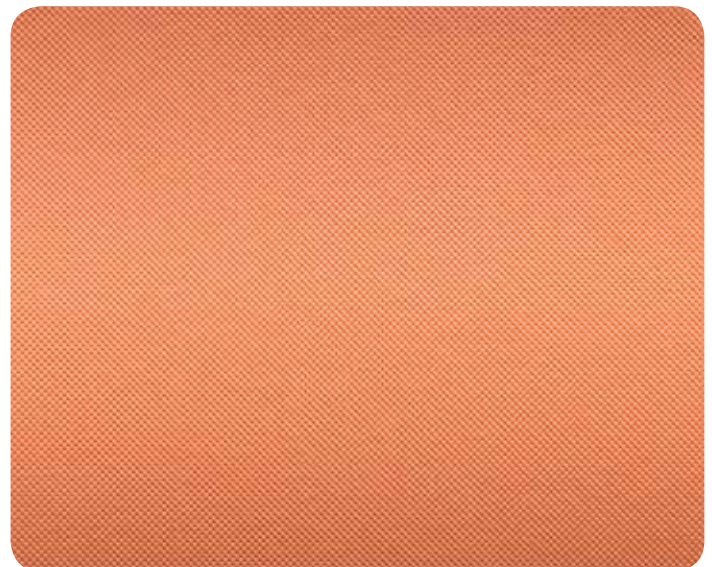
reddot design award  
winner 2013



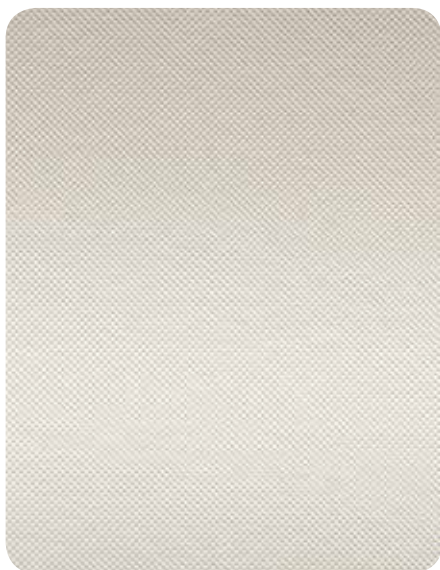
Plex Copper



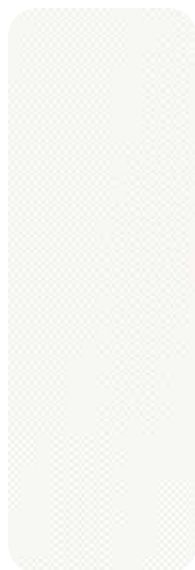
Plex Graphite



Plex Copper DarkTone



Plex Argent



Plex White



Plex Umbra

All Innovations laminates are for vertical use only, with the exception of Brushed Stainless Steel. Innovations designs have been manufactured for optimum decorative effect and have minimal surface protection. The majority of the vertical grades of Innovations laminates have low resistance to wear, scratch and impact. The non-metallic laminates have a medium resistance to impact. Appropriate care must be exercised in the application and use of these products. The Laminex Innovations range consists of several laminate types and where applicable conforms to the requirements of Australian/New Zealand Standard 2924. Many Innovations options are available from our manufacturing plant with a lead-time of 7 working days. \*Plex White is a melamine surface.

## COLOUR RANGE



Polar White Strike



Black Strike



Artisan Nero



Carbon Crush



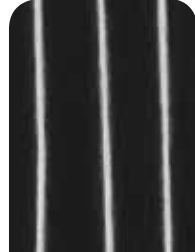
Black Magic



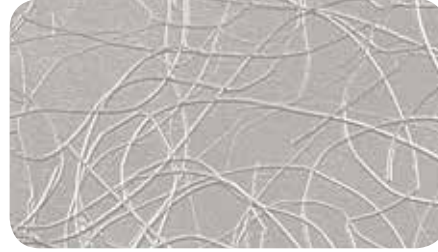
Brushed Platinum



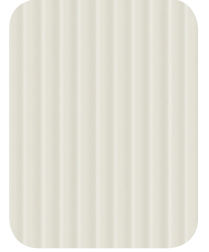
Ash White Rhythm#



Tribal Graphic#



Entanglement



Sarsen Grey Corrugate



Ash White Rindle



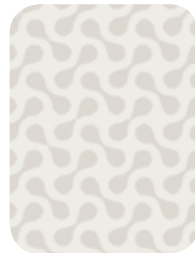
Snow Crush



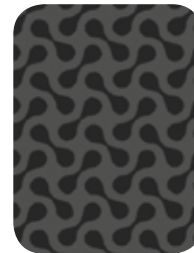
Creased Aluminium



Fossil Strike



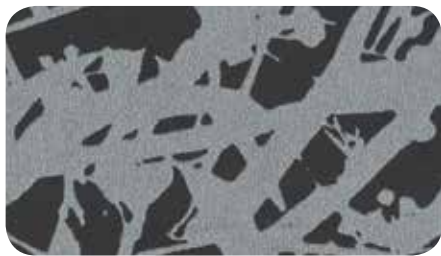
Pure Clone



Bold Clone



Ornamental Espresso#



Ebony Flourish



Brushed Bronze



Stellar Rindle



Fossil Rhythm#



Black Riser#



Silver Lustre



Brushed Stainless Steel



Brushed Graphite



Graphite Crossroads



Lounge Pearl\*

\*Recipient of German Design Council Interior Innovations Award 2014.

#Swatches shown at 50% of actual size. Please refer to actual samples for accurate scale.



Satin Platinum



Dusk Flourish



Luscious Illumina



Artisan



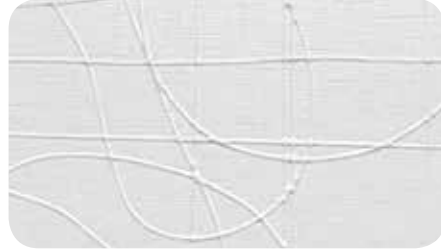
Brushed Titanium



Juicy Strike



Juicy Magic



Intrigue



Anodised



Ragged Copper



Crafted Copper



Copper Lustre



Mirror Smoke#



Chichi Magic



Copper Crossroads



Invoke



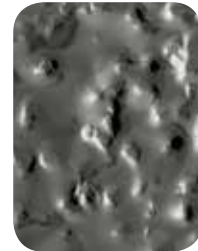
Tribal Flame#



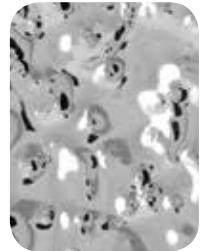
Platinum Lustre



Polar White Magic



Volcano Gunmetal#



Volcano Natural#



Discovery



Satin Smoke



Trans Rondo



Goddess Illumina



Flute Silver



Stellar Rhythm#



Stellar Illumina#



Tracery#



Zinc Lustre



Alumina Metaltex



Aluminium Forte

## INNOVATIONS METALLICS

Made with real metallic foils coated with a protective lacquer, Laminex Metallic Laminates offer a distinctive and decorative metallic look. The 'Metallics' range of laminates is covered by the relevant 'Metallics' technical data information as detailed at laminex.com.au

- Metallic laminates, with the exception of Brushed Stainless Steel, are intended for vertical applications only and can be damaged by heat or steam, hard objects, abrasive substances and solvents. Care should be taken with handling and fabrication as damage to the protective surface lacquer will lead to corrosion of the metal. Avoid metal to metal contact such as when using fittings, use a mastic or a gasket to prevent metal to metal corrosion. Brushed Stainless Steel is a postformable metallic laminate with a stainless steel surface. It has similar surface properties to solid stainless steel. Although it will scuff or scratch, it has extremely high wear resistance and is highly resistant to staining and chemical attack, making it ideal for laboratories, schools and hospitals where a durable and hygienic surface is required. Direct contact with high temperatures above 60°C should be avoided. Do not use Metallics laminates in high humidity environments as corrosion of the metal foil may occur. Refer to the Laminex Metallics Technical Data Sheet for specific fabrication instructions.
- Gloss metals reflect and refract light. It is recommended that you view the product under similar 'final state' lighting conditions before specifying if there is a requirement for absolute colour uniformity.
- Gloss levels may vary between batches. If multiple sheets are being used they should be checked for apparent colour consistency.
- Brushed Stainless Steel metallic should only be postformed on a 'Brandt' type machine.
- Attention: All edges of the Brushed Stainless Steel laminate must be deflashed prior to installation to avoid injuries and delamination of the stainless steel foil by surface traffic. We recommend deflashing all edges by use of a grinding pad such as 3M Diapad™, a file or abrasive paper. Note that special fabrication requirements apply to Brushed Stainless Steel laminate. Contact our Customer Service Centre on 132 136 for detailed information or refer to Laminex Brushed Stainless Steel TDS.

AVAILABILITY						
Colour Name	Code	Laminate		Vertical Post-forming Option	Applications	
		Finish(es)	Size		Vertical Use	Horizontal Use
Alumina Metaltex	967	Metallic	2400x1200		√	
Aluminium Forte <sup>3</sup>	242	Metallic	2400x1200		√	
Anodised	964	Metallic	2400x1200		√	
Artisan <sup>1</sup>	535	Embossed	2400x1200		√	
Artisan Nero <sup>1</sup>	615	Embossed	2400x1200		√	
Ash White Rhythm <sup>1</sup>	100	Embossed	2400x1200		√	
Ash White Rindle <sup>1</sup>	101	Embossed	2400x1200		√	
Black Magic <sup>1</sup>	566	Embossed	2400x1200		√	
Black Riser <sup>1</sup>	102	Embossed	2400x1200		√	
Black Strike <sup>1,4</sup>	103	Embossed	2400x1200		√	
Bold Clone <sup>1</sup>	104	Embossed	3600x1200		√	
Brushed Bronze	508	Metallic	2400x1200		√	
Brushed Graphite	509	Metallic	2400x1200		√	
Brushed Platinum	510	Metallic	2400x1200		√	
Brushed Stainless Steel	957	Metallic	2400x1000		√	√
Brushed Titanium	999	Metallic	2400x1200		√	
Carbon Crush <sup>1</sup>	234	Embossed	3000x1200		√	
Chichi Magic <sup>1</sup>	105	Embossed	2400x1200		√	
Copper Crossroads	511	Metallic	2400x1200		√	
Copper Lustre <sup>1</sup>	540	Natural	3600x1200	√	√	
Crafted Copper	240	Metallic	2400x1200		√	
Creased Aluminium	512	Metallic	2400x1200		√	
Discovery <sup>1</sup>	513	Natural/Gloss	3600x1200	√	√	
Dusk Flourish <sup>1</sup>	106	Natural/Gloss	3600x1200		√	
Ebony Flourish <sup>1</sup>	107	Natural/Gloss	3600x1200		√	
Entanglement	617	Metallic	2400x1200		√	
Flute Silver <sup>2</sup>	917	Metallic	2400x1200		√	
Fossil Rhythm <sup>1</sup>	109	Embossed	2400x1200		√	
Fossil Strike <sup>1,4</sup>	110	Embossed	2400x1200		√	
Goddess Illumina <sup>1</sup>	515	Natural/Gloss	3600x1200	√	√	
Graphite Crossroads	516	Metallic	2400x1200		√	
Intrigue	618	Metallic	2400x1200		√	
Invoke <sup>1</sup>	113	Natural/Gloss	3600x1200		√	

- Due to hand treated finishes, some batch to batch variation is possible.

## INNOVATIONS LEATHER TOUCH LAMINATES

Innovations Lounge Pearl provides a soft touch leather look, with the advantages of laminate. It is not only easier to care for and more robust than real leather, it is also less resource intensive to produce and there is more consistency between batches. Lounge Pearl is more UV-resistant (lightfast) than comparable surfaces made of real leather and last but not least, far fewer chemicals are used in the production process. Clean with standard artificial leather care products, refer to the Care and Maintenance sheet at laminex.com.au

## INNOVATIONS METAL-INSPIRED DESIGNS

Utilising the dynamic sheen of the look of metal and created to have the appeal of metal surfaces, this range includes the Illumina and Lustre laminates, which represent the sublime union of design and technology.

- Illumina designs utilise technology that creates exciting colour shifts and distortion in various lighting conditions and viewing angles. The degree of colour shift will vary with the level of gloss or sheen finish (i.e. Gloss finish will provide greater degree of shift than Natural finish). Gloss finish has low resistance to scratching. Adjacent panels should be aligned in the same length, width and up-down orientation to avoid unwanted colour differences.
- Innovations Lustre and Illumina laminates are supplied only as vertical postforming grade. Postforming to be no less than 10mm in the machine direction only.

## INNOVATIONS TEXTURED LAMINATES

This range of Innovations laminates creatively combine surface textures with colour. The Rhythm, Rindle, Magic, Strike, Crush and Artisan collections of embossed laminates showcase a variety of colours in exciting new dimensions. These laminates are also recommended for vertical use only and are non-postformable.


Colour Name	Code	Laminate		Vertical Post-forming Option	Applications	
		Finish(es)	Size		Vertical Use	Horizontal Use
Juicy Magic <sup>1</sup>	024	Embossed	2400x1200		√	
Juicy Strike <sup>1,4</sup>	114	Embossed	2400x1200		√	
Lounge Pearl	098	Embossed	2400x1200		√	
Luscious Illumina <sup>1</sup>	518	Natural/Gloss	3600x1200	√	√	
Mirror Smoke	241	Metallic	2400x1200		√	
Ornamental Espresso <sup>1</sup>	248	Gloss	3600x1200	√	√	
Platinum Lustre <sup>1</sup>	541	Natural	3600x1200	√	√	
Plex Argent	091	Plex	2400x1200		√	
Plex Copper	090	Plex	2400x1200		√	
Plex Copper Dark Tone	089	Plex	2400x1200		√	
Plex Graphite	093	Plex	2400x1200		√	
Plex Umbra	092	Plex	2400x1200		√	
Plex White	097	Plex	2400x1200		√	
Polar White Magic <sup>1</sup>	115	Embossed	2400x1200		√	
Polar White Strike <sup>1,4</sup>	116	Embossed	2400x1200		√	
Pure Clone <sup>1</sup>	117	Natural/Gloss	3600x1200		√	
Ragged Copper	952	Metallic	2400x1200		√	
Sarsen Grey Corrugate <sup>1</sup>	981	Corrugate	2400x1200		√	
Satin Platinum	619	Metallic	2400x1200		√	
Satin Smoke	249	Metallic	3000x1200		√	
Silver Lustre <sup>1</sup>	858	Natural	3600x1200	√	√	
Snow Crush <sup>1</sup>	236	Embossed	3000x1200		√	
Stellar Illumina <sup>1</sup>	958	Natural/Gloss	3600x1200	√	√	
Stellar Rhythm <sup>1</sup>	118	Embossed	2400x1200		√	
Stellar Rindle <sup>1</sup>	119	Embossed	2400x1200		√	
Tracery	598	Metallic	2400x1200		√	
Trans Rondo	593	Metallic	2400x1200		√	
Tribal Flame	120	Metallic	2400x1200		√	
Tribal Graphic	121	Metallic	2400x1200		√	
Volcano Gunmetal <sup>5</sup>	095	Metallic	2400x1200		√	
Volcano Natural <sup>5</sup>	096	Metallic	2400x1200		√	
Zinc Lustre <sup>1</sup>	749	Natural	3600x1200	√	√	

1. Refer to laminex.com.au for the technical data sheet on vertical grade laminates. 2. Flute Silver has a specific grain direction as indicated by arrows printed on the protective film. When fabricating, adjacent panels must be aligned so that the arrows run in the same direction. 3. Aluminium Forte has superior scratch resistance to other Metallic laminates but is still recommended for vertical use only. 4. Embossed linear finishes such as Strike cannot be guaranteed perfectly parallel with the long edge of the laminate and machining may be required to realign. 5. Volcano decors have specific fabrication recommendations, refer to the Laminex Metallics TDS at laminex.com.au





**Laminex®**  
Inspire your space

 For more inspiration join us on [facebook.com/thelaminexgroupau](https://www.facebook.com/thelaminexgroupau)

For a sample call 1800 002 204. For more information visit [laminex.com.au](https://www.laminex.com.au) or call 132 136.

Laminex Innovations is marketed and distributed by Laminex Group Pty Limited ABN 98 004 093 092, trading as Laminex. The colours and finishes of the products featured within the imagery in this brochure are as close to Laminex Innovations as photographic lighting and our printing processes allow. Different camera angles, although not designed to be misleading can sometimes distort actual size and distances. Laminex Innovations is no different than any other material in that darker colours will always show scratches and superficial wear and tear more readily than lighter colours. Laminex Innovations should be protected from strong, direct sunlight as continuous exposure may cause discolouration or fading to the surface. Please obtain a copy of the terms and conditions of the Laminex Innovations 7 year limited warranty from [laminex.com.au](https://www.laminex.com.au). This warranty is in addition to any rights that may exist under the Australian Consumer Law. Laminex®, Innovations®, Freestyle®, CrystalGloss®